

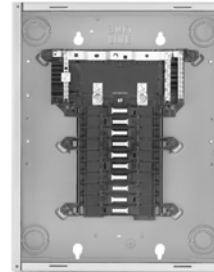
1Ø3W Load Centers, 120/240 Vac, UL Listed

Table 1.16: Main Lugs (Order QO, QOT, QO-EPD, QO-GFI, QO-AFI, and QO-PL branch circuit breakers from pages 1-2 and 1-3)

Mains Rating	Spaces	Max. 1P Circuits▲	Max. Tandem Circuit Breakers	\$ Price (Interior, Box and Cover)	Load Center Box and Interior		Indoor Cover with Door (Order Separately)			Main Wire Size AWG/kcmil		Equipment Ground Bar Kit (Order Separately)		Box No. See Page 1-17	
					Cat. No.	\$ Price	Flush Cat. No.	Surface Cat. No.	\$ Price	Al	Cu	Cat. No.	\$ Price		
Fixed Mains—Factory-Installed Main Lugs—10 kA Short Circuit Current Rating ■															
30 A	2	2	0	41.70	QO2L30S◆★	41.70					12-10	14-10	PK3GTA1	11.40	1
70 A	2	4	2	69.00	QO24L70F/S▼△	69.00					12-3	14-4	PK4GTA	10.80	2
100 A	6	12	6	87.00	QO612L100F/S▼□	87.00	Cover Included—Without Door				8-1	8-1	PK7GTA	11.70	4
				90.00	QO612L100DF/S▼□	90.00							Cover Included—With Door	PK7GTA	11.70
	8	16	8	131.00	QO816L100F/S▼□	131.00	Cover Included—Without Door	8-1	8-1		8-1	8-1	PK7GTA	11.70	4
				143.00	QO816L100DF/S▼□	143.00	Cover Included—With Door						PK7GTA	11.70	4
100 A	6	12	6	111.00	QO612L100DFCU/SCU▼□◇	111.00	Cover Included—With Door	8-1	8-1		8-1	8-1	PK7GTA	11.70	4
	8	16	8	174.00	QO816L100DFCU/SCU▼□◇	174.00	Cover Included—With Door						PK7GTA	11.70	4
125 A	4	8	4	93.00	QO148L125GF/S▼★	93.00	Cover Included—Without Door				12-2/0	14-2/0	PK7GTA*		21
Convertible Mains—Factory-Installed Main Lugs—65 kA Short Circuit Current Rating QOM1 Main Frame Size—Convertible to Main Circuit Breaker—Cu Bus ▼															
125 A	12	12	0	196.70	QO112L125G	159.00	QOC16UF	QOC16US	37.70	6-2/0				PK9GTA*	6
	12	24	12	235.70	QO11224L125G	198.00	QOC16UF	QOC16US	37.70					PK15GTA*	6
	16	16	0	255.70	QO116L125G	218.00	QOC24UF	QOC24US	37.70					PK12GTA*	7
	16	24	8	300.70	QO11624L125G	263.00	QOC24UF	QOC24US	37.70					PK15GTA*	7
	20	20	0	271.70	QO120L125G	234.00	QOC24UF	QOC24US	37.70					PK15GTA*	7
	20	24	4	370.70	QO12024L125G	333.00	QOC24UF	QOC24US	37.70					PK15GTA*	7
	24	24	0	381.70	QO124L125G	344.00	QOC24UF	QOC24US	37.70					PK15GTA*	7
24	32	0	434.60	QO132L125G	395.00	QOC32UF	Use Flush	39.60	PK23GTA, LK100AN*	8					
Convertible Mains—Factory-Installed Main Lugs—65 kA Short Circuit Current Rating, QOM2 Main Frame Size—Convertible to Main Circuit Breaker—Cu Bus ▼															
150 A	20	30	10	419.00	QO12030L150G	332.00	QOC30UF	QOC30US	87.00	6-250				PK23GTA, LK100AN*	9
	24	24	0	431.00	QO124L150G	344.00	QOC30UF	QOC30US	87.00					PK15GTA*	9
	30	30	0	437.00	QO130L150G	350.00	QOC30UF	QOC30US	87.00					PK23GTA, LK100AN*	9
200 A	12	12	0	353.00	QO112L200G	266.00	QOC30UF	QOC30US	87.00	6-250				PK15GTA*	9
	24	36	12	819.00	QO12436L200FT◆	732.00	QOC40UF	QOC40US	87.00					PK23GTA, LK100AN*	10
	30	30	0	494.00	QO130L200G	407.00	QOC30UF	QOC30US	87.00					PK23GTA, LK100AN*	9
	30	40	10	554.00	QO13040L200G	467.00	QOC30UF	QOC30US	87.00					PK23GTA, LK100AN*	9
	40	40	0	746.00	QO140L200G	659.00	QOC40UF	QOC40US	87.00					PK23GTA, LK100AN*	10
	40	60	20	944.00	QO14060L200G	857.00	QOC40UF	QOC40US	87.00					(2) PK15GTA*	10
42	52	10	921.00	QO14252L200G	810.00	QOC42UF	QOC42US	111.00	(2) PK15GTA*	11					
225 A	42	42	0	828.00	QO142L225G	717.00	QOC42UF	QOC42US	111.00	6-300			PK23GTA, LK100AN*	11	
Fixed Mains—Factory-Installed Main Lugs—65 kA Short Circuit Current Rating ▼															
400 A	30	30	0	1641.00	QONQ30LS400 (Int) MH50 (box)◆	1080.00 75.00	NC50NQVF	NC50NQVS	486.00	(1) 1/0-750 or (2) 1/0-300	PK27GTA◆ or PK15GTA6	33.80 53.00			15
400 A	42	42	0	1746.00	QONQ42LS400 (Int)◆ MH50 (box)	1185.00 75.00	NC50NQVF	NC50NQVS	486.00	(1) 1/0-750 or (2) 1/0-300					

Above listings through 200 A mains rating meet Federal Specification W-P-115C as Type 1, Class 2.

- ▲ Maximum single pole branch circuits utilizing QO and/or QOT circuit breakers.
- UL short circuit current rating depends on lowest interrupting rating of circuit breaker installed.
- ◆ Will not accept QO-EPD or Qwik-Gard® QO-GFI or QO-AFI circuit breakers.
- ★ Mains rated 25 A when Al wire is used.
- ▼ Order F for flush device or S for surface device.
- △ Use 10 AWG maximum size wire for GFI and AFI circuit breakers.
- 70 A Max. branch circuit breaker and 70 A max. back fed main circuit breaker.
- ◇ CU indicates copper bus.
- ☆ Copper bus.
- ▽ UL Listed 5000 A short circuit current rating for corner grounded Delta systems. Use QO-H circuit breakers only.
- ◆ Supplied with feed-thru lugs.
- Factory-included.
- ◆ Interior only, order box separately.
- ◆ PK27GTA includes a 6-2/0 AWG Al/Cu lug.
- PE1A Discount Schedule.



QO120L125G



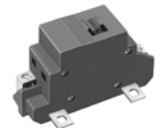
QO816L100F or S without cover

Main Circuit Breaker Kits

Table 1.17: Field-Installed Main Circuit Breaker (Use with Convertible Load Centers Only)

Main Circuit Breaker Rating▲	Convertible Load Center Mains Rating	QOM1 Frame Size			Lug Wire Size ‡ AWG/kcmil	QOM2 Frame Size †				
		22 k AIR ◆		Lug Wire Size ‡ AWG/kcmil		Main Circuit Breaker Rating▲	Convertible Load Center Mains Rating	22 k AIR ◆		Lug Wire Size ‡ AWG/kcmil
		Main Circuit Breaker	\$ Price					Main Circuit Breaker	\$ Price	
50 A	100-125	QOM50VH	140.00	12-2/0 Al or Cu	100 A	150-225	QOM2100VH	468.00	4-300 Al or Cu	
60 A	100-125	QOM60VH	140.00		125 A	150-225	QOM2125VH	468.00		
70 A	100-125	QOM70VH	140.00		150 A	150-225	QOM2150VH	468.00		
80 A	100-125	QOM80VH	201.00		175 A	200-225	QOM2175VH	468.00		
90 A	100-125	QOM90VH	201.00		200 A	200-225	QOM2200VH	468.00		
100 A	100-125	QOM100VH	201.00		225 A	225	QOM2225VH	468.00		
110 A	125	QOM110VH	468.00							
125 A	125	QOM125VH	468.00							

- Do not exceed the load center mains rating.
- ◆ 22 k AIR main circuit breaker UL Listed for use ahead of QO, QOT and QO-PL 10 k AIR branch circuit breakers to permit their application on systems with up to 22 kA available fault current.
- † Wire range listed for QOM circuit breaker kits is the wire range of that circuit breaker. To find out maximum wire size permitted in a particular load center per UL, see pages 1-5 through 1-11 under Main Wire Size.
- ‡ Add suffix 1021 for 120, 208 or 240 Vac shunt trip. Add \$126.00.



QOM1 Frame Size 50-125 Amperes



QOM2 Frame Size 100-225 Amperes

		QOU Circuit Breakers				QOM1 and QOM2 Main Circuit Breakers		Multi 9™ Circuit Breakers and Supplementary Protectors						EDB Circuit Breakers							
																					
Circuit Breaker Type	Plug-on	—				—	—	—						—							
	Bolt-on	—				—	QOM1-VH	QOM2-VH	—						New!						
	Unit Mount	QOU		QYU▲	—	—	UL 489 C60N			UL1077 C60N■			C60H-DC			—		—		—	
Number of Poles	1	2	3	1	2	2	1	2	3	1	2	3,4	1	2	1	2,3	1	2,3	1	2,3	
Current Range	10-100	10-125	10-100	10-30	50-125	100-225	0.5-35	0.5-35	0.5-35	0.5-63	1-63	1-63	0.5-40	0.5-40	15-70	15-125	15-70	15-125	15-70	15-125	
Interrupting Ratings																					
UL/CSA Rating (kA RM/S) (50/60 Hz)	120 Vac	10	10	10	—	22	22	10	—	—	10	10	10	—	—	25	25	65	65	100	100
	120/240 Vac	10	10	10	—	22	22	5	10	10	10	10	10	—	—	18	25	35	65	65	100
	240 Vac♦	—	—	10	—	—	—	5	10	10	10	10	10	—	—	18	25	35	65	65	100
	277 Vac	—	—	—	5	—	—	—	—	—	5	5	5	—	—	18	18	35	35	65	65
	480Y/277 Vac	—	—	—	—	—	—	10	10	10	—	5	5	—	—	—	18	—	35	—	65
DC Ratings	48 Vdc	5★	5★	5★	—	—	—	—	—	10	10	—	5	5	—	—	—	—	—	—	—
	60 Vdc	5▼	5▼	5▼	—	—	—	—	—	10	10	—	5	5	—	—	—	—	—	—	—
	65 Vdc	—	—	—	—	—	—	—	—	10	10	—	5	5	—	—	—	—	—	—	—
	125 Vdc	—	—	—	—	—	—	—	—	10	—	—	5	5	—	—	—	—	—	—	—
	250 Vdc	—	—	—	—	—	—	—	—	—	—	—	5	5	—	—	—	—	—	—	—
	500 Vdc	—	—	—	—	—	—	—	—	—	—	—	—	—	5●	—	—	—	—	—	—
IEC 60947-2 (50/60 Hz) Icu	240 Vac	—	—	—	—	—	—	20	20	20	10	10	10	20	10	20	—	—	—	—	—
	415 Vac	—	—	—	—	—	—	—	10	10	—	5	5	—	—	10	—	—	—	—	
Special Ratings																					
Fed. Specs W-C-375B/GEN		X	X	X	X	X	X	X	X	X	—	—	—	—	—	X	X	X	X	X	X
Other Standard		HACR Δ				—	—	—	—	—	—	□	—	—	—	HACR					
Accessories and Modifications																					
Shunt Trip		X◇	X◇	X◇	X◇	—	X◇	X	X	X	X	X	X	X	X	X◇	X◇	X◇	X◇	X◇	X◇
Undervoltage Trip		—	—	—	—	—	—	X	X	X	X	X	X	X	X	—	—	—	—	—	—
Auxiliary Switches		X◇	X◇	X◇	X◇	—	—	X	X	X	X	X	X	X	X	X◇	X◇	X◇	X◇	X◇	X◇
Alarm Switch		X◇	X◇	X◇	X◇	—	—	X	X	X	X	X	X	X	X	X◇	X◇	X◇	X◇	X◇	X◇
Handle Operators		—	—	—	—	—	—	X	X	X	X	X	X	X	—	—	—	—	—	—	—
Handle Padlock Attachment		X	X	X	X	X	X	X	X	X	X	X	X	X	X	X	X	X	X	X	X
Trip System Type																					
Thermal-magnetic		X	X	X	X	X	X	X	X	X	X	X	X	X	X	X	X	X	X	X	X
Molded Case Switch		—	X	X	—	—	—	—	—	—	—	—	—	—	—	—	—	—	—	—	—
Dimensions (1P Unit Mount)																					
Dimensions (1P Unit Mount) in. (mm)	Height	4.05 (103)				5.09 (129)★		5.60 (142)★		4.21 (107)▽			3.19 (81)			3.19 (81)			5.66 (144)		
	Width	0.75 (19)				5.00 (127)★		5.07 (129)★		0.71 (18)			0.71 (18)			0.71 (18) 1.42 (36)			0.98 (25)		
	Depth	2.92 (74)				3.47 (88)★		3.60 (91)★		2.76 (70)			2.76 (70)			2.56 (65)			4.05 (103)		
Pages		Pages 7-14				Pages 1-2		Pages 7-16 through 7-19						Page 9-17							

Note: All circuit breakers on this chart are UL Listed and CSA Certified unless otherwise noted.

- ▲ QYU is a UL 1077 supplementary protector.
- C60N are recognized components per UL 1077.
- ◆ For information regarding 3Ø corner grounded systems see the Supplemental Digest.
- ★ 1P and 2P, 10-70 A and 3P 10-60 A only.
- ▼ QOU is UL Listed for 60 Vdc per pole 80-100 A, 1P; 80-125 A, 2P; and 70-100 A, 3P.
- Δ HACR on QOU 1P and 3P 15-100 A, 2P 15-125 A;
- UL 489A for DC Telecom applications (1-pole only).
- ◇ Factory-installed option only
- ☆ QOM1 and QOM2 dimensions are for 2-pole unit.
- ▽ 480 V C60 height is 5.56 in. (141 mm).
- 2 poles must be wired in series for 500 Vdc.

7 MINIATURE AND MOLDED CASE CIRCUIT BREAKERS