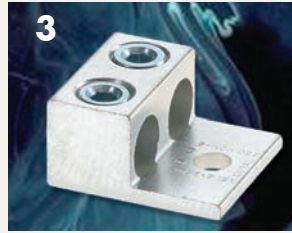
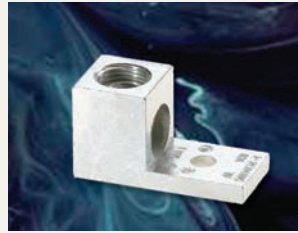


SINGLE & DOUBLE LUGS



Versatile and reusable set screw connectors made of 6061T-6 aluminum alloy. Tin plated for low contact resistance. Suitable for use with both copper and aluminum conductors. Rated 600 volts.

*Slotted Screws

CATALOG NO.	UPC CODE	FIG.	WIRE RANGE CU-AL	LENGTH	HEIGHT	WIDTH	MTG. HOLE	CTN. QTY.	SHPG. WT. LBS./100
6T	00100	1	4-14 AWG	.938	.500	.375	.203	100	1
4T	00101	1	4-14 AWG	1.060	.500	.375	.250	100	1.5
2T	00102	1	2-14 AWG	1.150	.580	.440	.250	100	2
0T	00103	1	1/0-14 AWG	1.340	.690	.530	.250	50	4
2/0T	00104	1	2/0-14 AWG	1.470	.750	.560	.250	50	4
3/0T	00105	2	3/0-6 AWG	1.750	.844	.719	.266	50	5
250T	00106	2	250 MCM-6 AWG	1.438	1.000	.810	.313	24	11
300T	00107	2	300 MCM-6 AWG	1.940	1.000	.820	.313	24	12
350T	00108	2	350 MCM-6 AWG	2.120	1.090	.900	.375	20	14
500T	00109	2	500 MCM-4 AWG	2.813	1.563	1.250	.406	6	26
600T	00110	2	600 MCM-2 AWG	2.813	1.580	1.190	.375	6	36
800T	00111	2	800-300 MCM	3.375	1.938	1.750	.656	6	47
1000T	00112	2	1000-500 MCM	3.375	1.938	1.750	.656	6	51
2-0T	00120	3	(2) 1/0-14 AWG	1.340	.690	1.120	.250	25	7
2-2/0T	00121	3*	(2) 2/0-14 AWG	1.470	.750	.560	.313	25	8
2-250T	00122	3	(2) 250 MCM-6 AWG	1.438	1.000	1.750	.313	10	20
2-350T	00123	3	(2) 350 MCM-6 AWG	2.120	1.090	1.880	.500	8	27
2-600T	00124	3	(2) 600 MCM-2 AWG	2.810	1.580	2.440	.500	4	55
2-800T	00125	3	(2) 800-300 MCM	3.375	1.938	3.188	.656	2	90
2-1000T	00126	3	(2) 1000-500 MCM	3.375	1.938	3.188	.656	2	92

PANELBOARD LUGS



Large size set screw connectors with multiple mounting holes for a secure, turn-prevent connection. Made of 6061T-6 aluminum alloy. Tin plated for low contact resistance. Suitable for use with both copper and aluminum conductors. Rated 600 volts. Mounting hole spacing is 1 3/4" from center to center.

CATALOG NO.	UPC CODE	FIG.	WIRE RANGE CU-AL	LENGTH	HEIGHT	WIDTH	MTG. HOLE	CTN. QTY.	SHPG. WT. LBS./100
250L2	00130	1	250 MCM-6 AWG	4.000	1.188	.875	9/16	15	15
350L2	00131	1	350 MCM-6 AWG	4.313	1.375	1.125	9/16	8	24
600L2	00132	1	600 MCM-2 AWG	4.688	1.563	1.500	9/16	4	46
800L2	00133	1	800-300 MCM	4.750	1.938	1.750	9/16	4	61
1000L2	00134	1	1000-500 MCM	4.750	1.938	1.750	9/16	4	63
2-250L2	00140	2	(2) 250 MCM-6	4.000	1.188	1.813	9/16	6	32
2-350L2	00141	2	(2) 350 MCM-6	4.313	1.375	2.000	9/16	4	43
2-600L2	00142	2	(2) 600 MCM-2	4.688	1.563	2.813	9/16	3	70
2-800L2	00143	2	(2) 800-300 MCM	4.750	1.938	3.188	9/16	2	90
2-1000L2	00144	2	(2) 1000-500 MCM	4.750	1.938	3.188	9/16	2	100
3-250L2/L4	00150	3	(3) 250 MCM-6	4.000	1.188	2.813	9/16	3	49
3-350L2/L4	00151	3	(3) 350 MCM-6	4.313	1.375	3.000	9/16	2	65
3-600L2/L4	00152	3	(3) 600 MCM-2	4.688	1.563	3.750	9/16	2	106
3-800L2/L4	00153	3	(3) 800-300 MCM	4.750	1.938	4.500	9/16	2	137
3-1000L2/L4	00154	3	(3) 1000-500 MCM	4.750	1.938	4.500	9/16	2	218