

JLS Class J Fuses

600 VAC • Fast Acting • 1 – 600 Amperes



JLS series fuses provide space saving, fast acting overload and short-circuit protection for non-inductive loads. When used for motors or other inductive loads, the ampere rating of JLS series fuses must be increased to prevent nuisance opening on in-rush currents. In such applications, JLS fuses may provide only short-circuit protection. Consider using Littelfuse POWR-PRO® JTD or JTD_ID series time-delay fuses in such circuits.

Applications

- General purpose circuits with little or no motor load.
- Resistive loads, such as resistance electric heat.
- Loads requiring fast acting overload protection, such as equipment containing solid-state devices.

Specifications

Voltage Ratings:	600 Volts AC
Interrupting Ratings:	200,000 amperes rms symmetrical
Ampere Range:	1 – 600 amperes
Approvals:	Standard 248-8, Class J
	UL Listed (File No: E81895)
	CSA Certified (File No: LR29862)
	QPL: Federal Specification No: WF-1814

Space Saving

- JLS fuse characteristics are similar to KLNLR/KLSR fast acting Class RK1 fuses, but dimensionally are much smaller.

Safety

- 200,000 A.I.R. — Reliable interruption of all overcurrents up to 200,000 amperes.
- Extremely current-limiting — Stops damaging short-circuit current faster than any mechanical protective device.
- Fast acting — Provides fast acting protection to equipment such as variable speed drives, rectifiers and other equipment containing surge sensitive components.

Longer Equipment Life

- Current-limiting design reduces damage to equipment caused by heating and magnetic effects of short-circuit currents.

Economical

- Extremely current-limiting design often permits use of readily available, less costly equipment.
- Manufacturers of equipment containing dual voltage devices can simplify manufacturing and reduce inventory by standardizing on 600 volt JLS fuses and Class J fuse blocks for all AC voltage ratings.

Easy to use

- 200,000 A.I.R. rating minimizes need for short-circuit calculations.

NOTE: Littelfuse JLS fuses are not time-delay fuses. For applications where short-duration surges and spikes may cause nuisance fuse opening, consider the use of Littelfuse POWR-PRO JTD or JTD_ID series time-delay fuses.

Ampere Ratings

1	25	60	125	300
3	30	70	150	350
6	35	80	175	400
10	40	90	200	450
15	45	100	225	500
20	50	110	250	600

Example part number (series & amperage): JLS 110

Recommended Fuse Blocks

LPSJ series, LJ600 series
Refer to the Blocks and Holders section of this catalog for additional information.

JLS Class J Fuses

600 VAC • Fast Acting • 1 — 600 Amperes

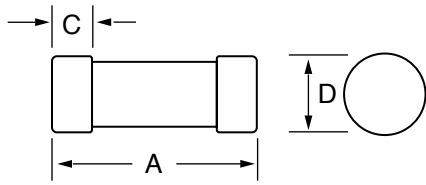


Fig. 1

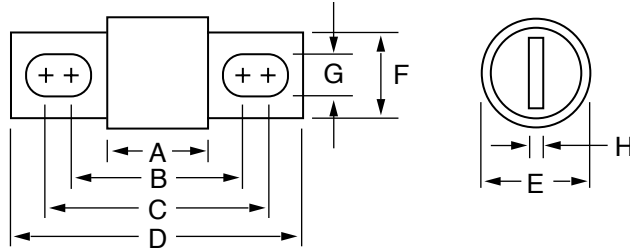
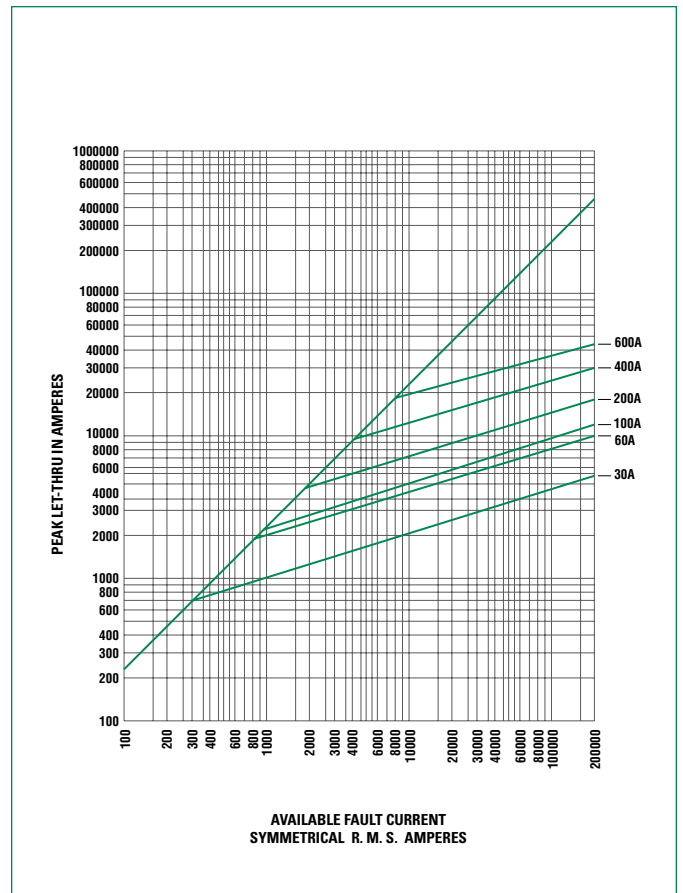
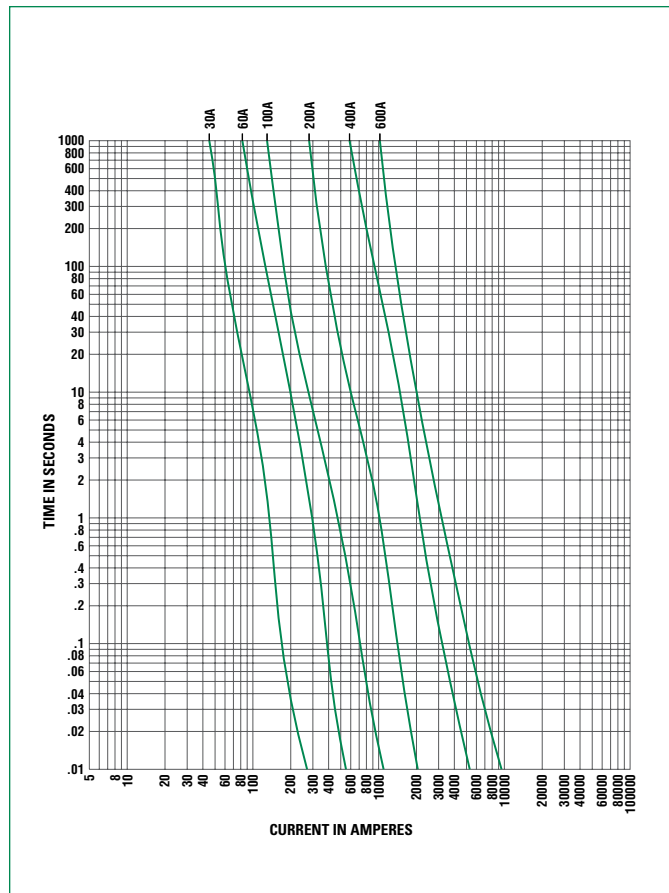


Fig. 2

Amperes	Refer to Fig. No.	Dimensions In Inches (mm in parentheses)							
		A	B	C	D	E	F	G	H
1 – 30	1	2¼ (57.2)	—	½ (12.7)	13/16 (20.6)	—	—	—	—
35 – 60	1	2¾ (60.3)	—	5/8 (15.9)	1¼ (27.0)	—	—	—	—
70 – 100	2	2⅝ (66.7)	3 ¹⁷ / ₃₂ (89.7)	3 ²³ / ₃₂ (94.5)	4 ⁵ / ₈ (117.5)	1 (25.4)	¾ (19.1)	9/32 (7.1)	1/8 (3.2)
110 – 200	2	3 (76.2)	4 ⁹ / ₃₂ (108.7)	4 ¹⁵ / ₃₂ (113.5)	5 ³ / ₄ (146.1)	1½ (38.1)	1 (28.6)	9/32 (7.1)	3/16 (4.8)
225 – 400	2	3 ³ / ₈ (85.7)	5 (130.2)	5 ³ / ₈ (136.5)	7 (181.0)	2 (50.8)	1 ⁵ / ₈ (41.3)	1 ³ / ₃₂ (10.3)	¼ (6.4)
450 – 600	2	3 ³ / ₄ (95.3)	5 ²⁷ / ₃₂ (148.4)	6 ⁵ / ₃₂ (156.4)	8 (203.2)	2½ (63.5)	2 (50.8)	1 ¹ / ₃₂ (13.5)	3/8 (9.5)





Series: [JLS](#)

JLS Series - UL Class J Fast-Acting Fuse

Technology: [Fuses](#)

JLS series fuses provide space-saving, fast-acting overload and short-circuit protection for non-inductive loads. When used for motors or other inductive loads, the ampere rating of JLS series fuses must be increased to prevent nuisance opening on inrush currents. In such applications, JLS fuses may provide only short circuit protection. Consider using Littelfuse POWR-PRO[®] JTD series time-delay fuses in such circuits.

Applications:

[Read More](#)

Download Datasheet



[JLS Series Datasheet](#)

JLS.pdf
(174,038 bytes)

Last Uploaded:
December 05, 2006

Electrical Characteristics

Key

Access specifications, certifications, check availability and order parts below:

Check distributor stock availability by clicking on the [CHECK] link. View certification PDF files by clicking on the certification logo. View the part details by clicking on the part number. To order sample parts, click on the [ADD] link. Click on the 'Key' button to view definitions for each column header. Sort parts by clicking on the column you wish to sort by.

CatalogNo	Certs.	Pkg	VAC (V)	VDC (V)	Current (A)	IR	Stock	Sample Cart
JLS001			600	0	1	200000A @ 600VAC	[Check]	[Add]
JLS003			600	0	3	200000A @ 600VAC	[Check]	[Add]
JLS006			600	0	6	200000A @ 600VAC	[Check]	[Add]
JLS010			600	0	10	200000A @ 600VAC	[Check]	[Add]
JLS015			600	0	15	200000A @ 600VAC	[Check]	[Add]
JLS020			600	0	20	200000A @ 600VAC	[Check]	[Add]
JLS025			600	0	25	200000A @ 600VAC	[Check]	[Add]
JLS030			600	0	30	200000A @ 600VAC	[Check]	[Add]
JLS035			600	0	35	200000A @ 600VAC	[Check]	[Add]
JLS040			600	0	40	200000A @ 600VAC	[Check]	[Add]
JLS045			600	0	45	200000A @ 600VAC	[Check]	[Add]
JLS050			600	0	50	200000A @ 600VAC	[Check]	[Add]
JLS060			600	0	60	200000A @ 600VAC	[Check]	[Add]
JLS070			600	0	70	200000A @ 600VAC	[Check]	[Add]
JLS080			600	0	80	200000A @ 600VAC	[Check]	[Add]
JLS090			600	0	90	200000A @ 600VAC	[Check]	[Add]
JLS100			600	0	100	200000A @ 600VAC	[Check]	[Add]
JLS110			600	0	110	200000A @ 600VAC	[Check]	[Add]
JLS125			600	0	125	200000A @ 600VAC	[Check]	[Add]
JLS150			600	0	150	200000A @ 600VAC	[Check]	[Add]
JLS175			600	0	175	200000A @ 600VAC	[Check]	[Add]
JLS200			600	0	200	200000A @ 600VAC	[Check]	[Add]
JLS225			600	0	225	200000A @ 600VAC	[Check]	[Add]
JLS250			600	0	250	200000A @ 600VAC	[Check]	[Add]
JLS300			600	0	300	200000A @ 600VAC	[Check]	[Add]
JLS350			600	0	350	200000A @ 600VAC	[Check]	[Add]
JLS400			600	0	400	200000A @ 600VAC	[Check]	[Add]
JLS450			600	0	450	200000A @ 600VAC	[Check]	[Add]
JLS500			600	0	500	200000A @ 600VAC	[Check]	[Add]
JLS600			600	0	600	200000A @ 600VAC	[Check]	[Add]

[Find A Distributor](#)