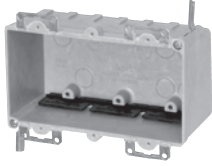


# Three Gang:

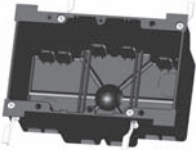
## Old Work/Manufactured Housing Boxes

### Series 9313-EW



Cu. In. Volume	Catalog Number	Component Description	Outside Dimensions			UPC# 85339	Std. Pkg. Qty.	Std. Pkg. Wt. (lb.)
			D	W	H			
42.5	9313-EW	Ears, wing brackets, Speed Klamps™-bulk packed	2-7/8	5-15/16	3-1/4	10093	25	15
42.5	9313-EWC3	Ears, wing brackets, 3 wire clamps-factory installed	2-7/8	5-15/16	3-1/4	10095	25	16
42.5	9313-EWK*	Ears, wing brackets, Speed Klamps™-factory installed	2-7/8	5-15/16	3-1/4	10094	25	15

### P-3520W



Cu. In. Volume	Catalog Number	Component Description	D	W	H	UPC# 85339	Std. Pkg. Qty.	Std. Pkg. Wt. (lb.)
52.0	P-3520W	Flexbox® Three gang, ears, wing brackets, molded-in Speed Klamps™ use LVP-2 partition for dual voltage applications	3-25/64	5-59/64	3-11/16	33201	12	8

## 3-1/2" Round Ceiling Boxes:

### Old Work/Manufactured Housing

### Series 9304



Cu. In. Volume	Catalog Number	Component Description	D	W	Fixture Rating	UPC# 85339	Std. Pkg. Qty.	Std. Pkg. Wt. (lb.)
3.5	9304* (Top photo)	Fixture mounting holes on 2-3/4" centers, not UL® listed. See NEC 2005 410.10.	5/8	3-3/8	-	10025	100	13
3.5	9304-G* (Btm photo)	Fixture mounting holes on 2-3/4" centers, ground strap, not UL® listed. See NEC 2005 410.10.	5/8	3-3/8	-	10026	100	16

### Series 9305



Cu. In. Volume	Catalog Number	Component Description	D	W	Fixture Rating	UPC# 85339	Std. Pkg. Qty.	Std. Pkg. Wt. (lb.)
14.0	9305	3/0 box with flange, Speed Klamps™-bulk packed	1-3/4	3-1/2	15 lb.	10030	50	16
14.0	9305-C2	3/0 box with flange, 2 wire clamps-factory installed	1-3/4	3-1/2	15 lb.	10032	50	17
14.0	9305-K*	3/0 box with flange, Speed Klamps™-factory installed	1-3/4	3-1/2	15 lb.	10034	50	17

### Series 9305-G



Cu. In. Volume	Catalog Number	Component Description	D	W	Fixture Rating	UPC# 85339	Std. Pkg. Qty.	Std. Pkg. Wt. (lb.)
14.0	9305-G	3/0 box with flange, ground strap, Speed Klamps™-bulk packed	1-3/4	3-1/2	15 lb.	10031	50	17
14.0	9305-GK*	3/0 box with flange, ground strap, Speed Klamps™-factory installed	1-3/4	3-1/2	15 lb.	10036	50	18

\* Indicates model shown • See page 7 for Attachment Coding descriptions