

Two Gang:

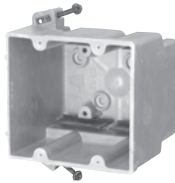
Residential Switch or Receptacle Box

Series 2302-N (con't)



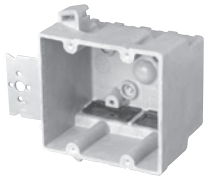
Cu. In. Volume	Catalog Number	Component Description	D	W	H	UPC# 85339	Std. Pkg. Qty.	Std. Pkg. Wt. (lb.)
37.0	2302-NKV	Angled mid-nails, Speed Klamps™-factory installed, energy efficient vapor seal	3-7/16	4	3-3/4	13077	48	32

Series 2302-SS



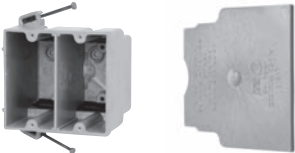
Cu. In. Volume	Catalog Number	Component Description	D	W	H	UPC# 85339	Std. Pkg. Qty.	Std. Pkg. Wt. (lb.)
37.0	2302-SS	Steel stud screws for use with non-load bearing studs 22 gauge or lighter, Speed Klamps™-bulk packed	3-7/16	4	3-3/4	13080	50	33
37.0	2302-SSK*	Steel stud screws for use with non-load bearing studs 22 gauge or lighter, Speed Klamps™-factory installed	3-7/16	4	3-3/4	13081	50	34

Series 2302-Z4



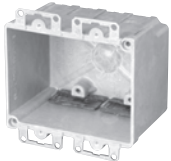
Cu. In. Volume	Catalog Number	Component Description	D	W	H	UPC# 85339	Std. Pkg. Qty.	Std. Pkg. Wt. (lb.)
37.0	2302-Z4	1/2" offset, "Z" hanger, Speed Klamps™-bulk packed	3-7/16	4	3-3/4	13082	50	40
37.0	2302-Z4K*	1/2" offset, "Z" hanger, Speed Klamps™-factory installed	3-7/16	4	3-3/4	13083	50	41

Low Voltage Partition



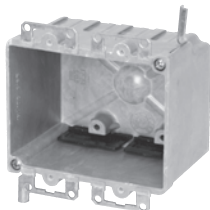
Catalog Number	Component Description	UPC# 85339	Std. Pkg. Qty.	Std. Pkg. Wt. (lb.)
LVP-1	Low voltage divider plate for use with 2302, 3303, 4304 Series only. See 2005 NEC 800.133(A)(1)(c).	80000	50. Consists of five (5) packages of 10 pieces each.	3

Series 9312-E



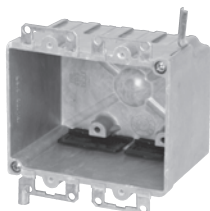
Cu. In. Volume	Catalog Number	Component Description	D	W	H	UPC# 85339	Std. Pkg. Qty.	Std. Pkg. Wt. (lb.)
28.0	9312-E	Ears, Speed Klamps™-bulk packed	2-3/4	4-1/8	3-1/4	10064	50	21
28.0	9312-EK*	Ears, Speed Klamps™-factory installed	2-3/4	4-1/8	3-1/4	29112	50	21

Series 9312-EW



Cu. In. Volume	Catalog Number	Component Description	D	W	H	UPC# 85339	Std. Pkg. Qty.	Std. Pkg. Wt. (lb.)
28.0	9312-EW	Ears, wing brackets, Speed Klamps™-bulk packed	2-3/4	4-1/8	3-1/4	29100	50	23
28.0	9312-EWC2	Ears, wing brackets, 2 wire clamps-factory installed	2-3/4	4-1/8	3-1/4	29110	50	25
28.0	9312-EWC4	Ears, wing brackets, 4 wire clamps-factory installed	2-3/4	4-1/8	3-1/4	29120	50	26
28.0	9312-EWK*	Ears, wing brackets, Speed Klamps™-factory installed	2-3/4	4-1/8	3-1/4	29111	50	24

Series 9329-EW



Cu. In. Volume	Catalog Number	Component Description	D	W	H	UPC# 85339	Std. Pkg. Qty.	Std. Pkg. Wt. (lb.)
32.5	9329-EW	Ears, wing brackets, Speed Klamps™-bulk packed	3-5/32	4-1/16	3-1/4	10801	50	24
32.5	9329-EWK*	Ears, wing brackets, Speed Klamps™-factory installed	3-5/32	4-1/16	3-1/4	10802	50	25

* Indicates model shown • See page 7 for Attachment Coding descriptions

