

Single Gang:

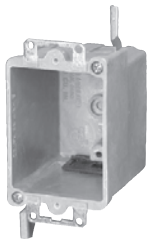
Residential Switch or Receptacle Box

Series 9363-E



| Cu. In. Volume | Catalog Number | Component Description | D | W | H | UPC# 85339 | Std. Pkg. Qty. | Std. Pkg. Wt. (lb.) |
|----------------|----------------|---------------------------------------|-------|-------|-------|------------|----------------|---------------------|
| 16.0 | 9363-E | Ears, Speed Klamps™-bulk packed | 2-7/8 | 2-3/8 | 3-1/4 | 10570 | 100 | 31 |
| 16.0 | 9363-EC2 | Ears, 2 wire clamps-factory installed | 2-7/8 | 2-3/8 | 3-1/4 | 10571 | 100 | 32 |
| 16.0 | 9363-EK* | Ears, Speed Klamps™-factory installed | 2-7/8 | 2-3/8 | 3-1/4 | 10576 | 100 | 31 |

Series 9363-EW



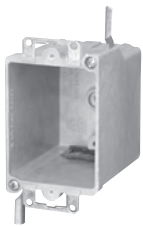
| Cu. In. Volume | Catalog Number | Component Description | D | W | H | UPC# 85339 | Std. Pkg. Qty. | Std. Pkg. Wt. (lb.) |
|----------------|----------------|--|-------|-------|-------|------------|----------------|---------------------|
| 16.0 | 9363-EW | Ears, wing brackets, Speed Klamps™-bulk packed | 2-7/8 | 2-3/8 | 3-1/4 | 10572 | 100 | 32 |
| 16.0 | 9363-EWC2 | Ears, wing brackets, 2 wire clamps-factory installed | 2-7/8 | 2-3/8 | 3-1/4 | 10573 | 100 | 35 |
| 16.0 | 9363-EWK* | Ears, wing brackets, Speed Klamps™-factory installed | 2-7/8 | 2-3/8 | 3-1/4 | 10578 | 100 | 33 |

Series 9368-E



| Cu. In. Volume | Catalog Number | Component Description | D | W | H | UPC# 85339 | Std. Pkg. Qty. | Std. Pkg. Wt. (lb.) |
|----------------|----------------|---------------------------------------|--------|-------|-------|------------|----------------|---------------------|
| 18.0 | 9368-E | Ears, Speed Klamps™-bulk packed | 3-3/16 | 2-3/8 | 3-1/4 | 76000 | 100 | 31 |
| 18.0 | 9368-EK* | Ears, Speed Klamps™-factory installed | 3-3/16 | 2-3/8 | 3-1/4 | 76003 | 100 | 31 |

Series 9368-EW



| Cu. In. Volume | Catalog Number | Component Description | D | W | H | UPC# 85339 | Std. Pkg. Qty. | Std. Pkg. Wt. (lb.) |
|----------------|----------------|--|--------|-------|-------|------------|----------------|---------------------|
| 18.0 | 9368-EW | Ears, wing brackets, Speed Klamps™-bulk packed | 3-3/16 | 2-3/8 | 3-1/4 | 76002 | 100 | 33 |
| 18.0 | 9368-EWK* | Ears, wing brackets, Speed Klamps™-factory installed | 3-3/16 | 2-3/8 | 3-1/4 | 76001 | 100 | 34 |



* Indicates model shown • See page 7 for Attachment Coding descriptions

